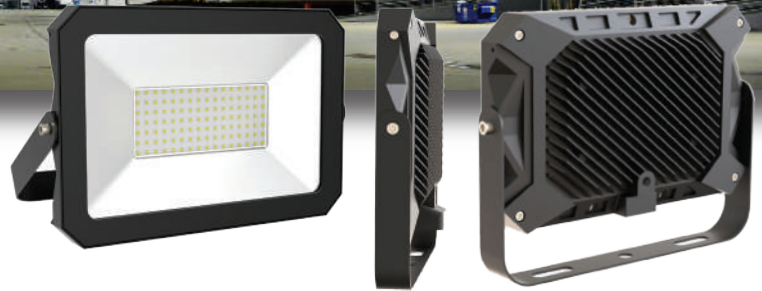




LED Flood Light IP65

The zolu lighting LED flood light ip65 is an energy-efficient way to provide controlled lighting to building facades and other general-purpose lighting applications. The fixture is very flexible to use and it can be mounted at the top of buildings, on poles, or on the ground, thanks to its pre-installed yoke mount to use as a stand or for hanging, and the IP65 wet location rated. These floodlights are perfect for open areas and spaces that require high output and wide light distribution.



Features and Benefits

- UL Certificate
- 5 Year Warranty
- IP65 wet location rated
- Motion sensor available

Applications

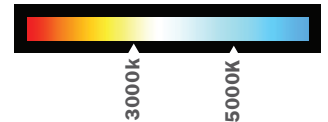
- Buildings facade lighting
- Museums
- Parking lots, gardens
- Billboards



Motion Sensor



Color Temperature



Technical Parameters

Product Code	Watts	Lumens	Voltage	Life Time	Color temperature	IP	Beam Angle	Warranty	Certificates
ZL10WFL30KUL	10W	1200lm	100-277 V	50,000 hrs	3000K	IP65	120°	5 year	UL
ZL10WFL50KUL	10W	1300lm	100-277 V	50,000 hrs	5000K	IP65	120°	5 year	UL
ZL20WFL30KUL	20W	2400lm	100-277 V	50,000 hrs	3000K	IP65	120°	5 year	UL
ZL20WFL50KUL	20W	2600lm	100-277 V	50,000 hrs	5000K	IP65	120°	5 year	UL
*ZL20WFL50KUL-M	20W	2600lm	100-277 V	50,000 hrs	5000K	IP65	120°	5 year	UL
ZL30WFL30KUL	30W	3600lm	100-277 V	50,000 hrs	3000K	IP65	120°	5 year	UL
ZL30WFL50KUL	30W	3900lm	100-277 V	50,000 hrs	5000K	IP65	120°	5 year	UL
ZL50WFL30KUL	50W	6000lm	100-277 V	50,000 hrs	3000K	IP65	120°	5 year	UL
ZL50WFL50KUL	50W	6500lm	100-277 V	50,000 hrs	5000K	IP65	120°	5 year	UL
ZL100WFL30KUL	100W	12000lm	100-277 V	50,000 hrs	3000K	IP65	120°	5 year	UL
ZL100WFL50KUL	100W	13000lm	100-277 V	50,000 hrs	5000K	IP65	120°	5 year	UL
ZL150WFL50KUL	150W	19500lm	100-277 V	50,000 hrs	5000K	IP65	120°	5 year	UL

- NOTE *: Motion sensor included
- NOTE: Motion sensor available upon request

For installation and safety notes visit: www.zolulighting.com