

LED Wall Washer Light RGB

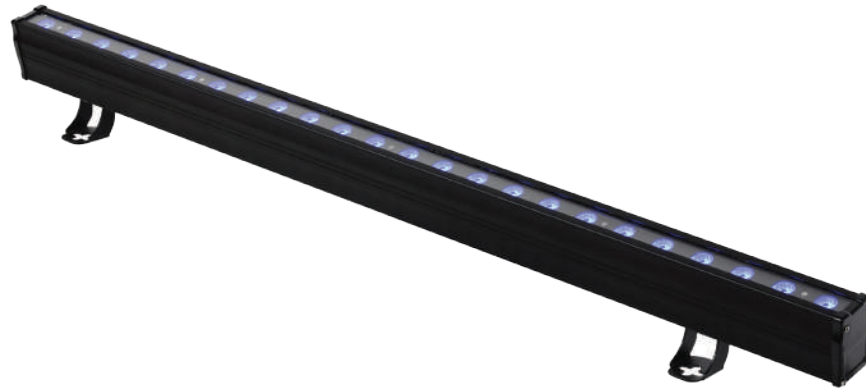
LED Wall Washer Light RGB is a powerful fixture that will brighten, enhance, and add visual interest to any room or situation providing uniform indirect lighting to a specific or large area. Commonly used in architectural settings, this fixture's sleek and sturdy aluminum housing is IP66 wet location rated, so it is suitable both indoors and outdoors for garden or courtyard, on a patio or deck, to decorate spaces and to highlight buildings, restaurants, and even stage sets, by producing a bright and dynamic environment. Each unit comes with two sturdy mounting brackets that allow for mounting on any flat surface, including ceilings, walls, and floors. Our LED wall washers can be controlled with a standard RF remote, a DMX512 controller, or the P2 system. Each fixture has a 50,000 hours life span and is ETL and CE approved.

Features and Benefits

- ETL Certificate
- 3 Year Warranty
- Die-cast aluminum
- Tempered glass + optical lens
- IP66 Protection

Applications

- Architecture lighting
- Entertainment lighting
- Building facade
- Tower and bridge



System P2



DMX512



RF Remote

Technical Parameters

Product Code	Watts	Lumens	Voltage	Dimensions	Life Time	Control Driver	Finish	IP	Beam Angle	Warranty	Certificates
ZL36WLWWRGBETL	36W	1980lm	100-277 V	1000x48x103mm	50,000 hrs	RF Remote ¹	Black	IP66	15°x45° ²	3 year	ETL / CE
•ZL54WLWWRGBETL	54W	2970lm	100-277 V	1000x48x103mm	50,000 hrs	RF Remote ¹	Black	IP66	15°x45° ²	3 year	ETL / CE
•ZL72WLWWRGBETL	72W	3960lm	100-277 V	1000x48x103mm	50,000 hrs	RF Remote ¹	Black	IP66	15°x45° ²	3 year	ETL / CE

- NOTE ¹ : DMX512 and P2 System controller optional upon request
- NOTE ² : Different beam angle available upon request (10°/30°/15°x30°/15°x55°)
- NOTE • : Special product available upon request

For installation and safety notes visit: www.zolulighting.com