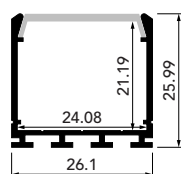


## Aluminum Profiles for LED Strips Installations

The profiles are assembled with the LED Strips Lights and accessories to complete the LED fixtures, this allows to maximize the applications and uses available for LED light strips. Zolu Lighting profiles are made from high-quality aluminum, and provide a stylish and finished look for both residential and commercial, specification grade lighting. Profiles eliminate the need for larger traditional light fixtures, and can be configured to direct light towards a specific area, and in many different lighting angles.

### ▶ Surface square profile / ZLPA-01

Available length: 2,00m (78.75")



#### Accessories

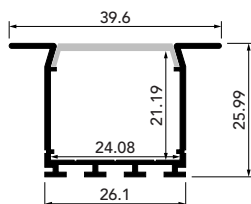
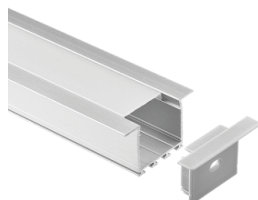
- Aluminum 1M/PC
- PC diffuser: 1M/PC (Frosted)
- End caps: 2 pcs/set
- Clips: 4 pcs/set
- PCB width: 12mm
- PCB width: 24mm

#### Suitable with

- Strip Light IP67
- Strip Light IP65
- Strip Light IP20

### ▶ Recessed profile / ZLPA-02

Available length: 2,00m (78.75")



#### Accessories

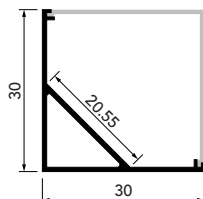
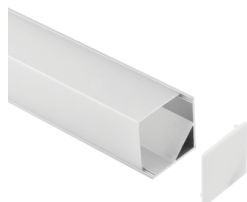
- Aluminum 1M/PC
- PC diffuser: 1M/PC (Frosted)
- End caps: 2 pcs/set
- Springs: 4 pcs/set
- PCB width: 24mm

#### Suitable with

- Strip Light IP67
- Strip Light IP65
- Strip Light IP20

### ▶ Square cornerback profile / ZLPA-03

Available length: 2,00m (78.75")



#### Accessories

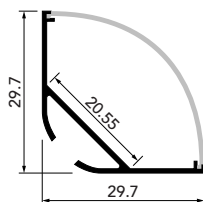
- Aluminum 1M/PC
- PC diffuser: 1M/PC (Frosted)
- End caps: 2 pcs/set
- Clips: 4 pcs/set
- PCB width: 20mm

#### Suitable with

- Strip Light IP67
- Strip Light IP65
- Strip Light IP20

### ▶ Round cornerback profile / ZLPA-04

Available length: 2,00m (78.75")



#### Accessories

- Aluminum 1M/PC
- PC diffuser: 1M/PC (Frosted)
- End caps: 2 pcs/set
- Clips: 4 pcs/set
- PCB width: 20mm
- Suspension slings optional
- 180° connection optional
- >90° rotate optional

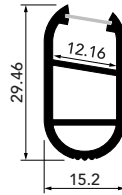
#### Suitable with

- Strip Light IP67
- Strip Light IP65
- Strip Light IP20

- The profile measurements are expressed in millimeters.
- LED Strip Light sold separately.

## ▶ Suspended profile / ZLPA-05

Available length: 2,00m (78.75")



### Accessories

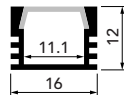
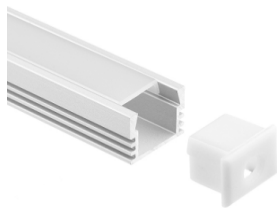
- Aluminum 1M/PC
- PC diffuser: 1M/PC (Frosted)
- End caps: 2 pcs/set
- Brackets: 4 pcs/set
- PCB width: 12mm

### Suitable with

- Strip Light IP65
- Strip Light IP20

## ▶ Slim Surface profile / ZLPA-08

Available length: 2,00m (78.75")



### Accessories

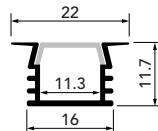
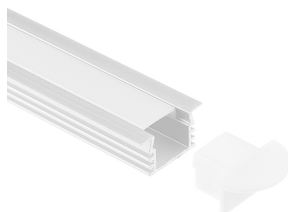
- Aluminum 2M/PC
- PC diffuser: 2M/PC (Frosted)
- End caps: 2 pcs/set
- Clips: 2 pcs/set
- PCB width: 11mm

### Suitable with

- Strip Light IP65
- Strip Light IP20

## ▶ Slim Recessed profile / ZLPA-09

Available length: 2,00m (78.75")



### Accessories

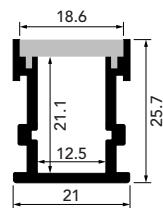
- Aluminum 2M/PC
- PC diffuser: 2M/PC (Frosted)
- End caps: 2 pcs/set
- Clips: 2 pcs/set
- PCB width: 11mm

### Suitable with

- Strip Light IP65
- Strip Light IP20

## ▶ Underground Paver profile / ZLPA-10

Available length: 2,00m (78.75")



### Accessories

- Aluminum 1M/PC
- PC diffuser: 1M/PC (Frosted)
- End caps: 2 pcs/set
- PCB width: 12mm

### Suitable with

- Strip Light IP65

- The profile measurements are expressed in millimeters.
- LED Strip Light sold separately.